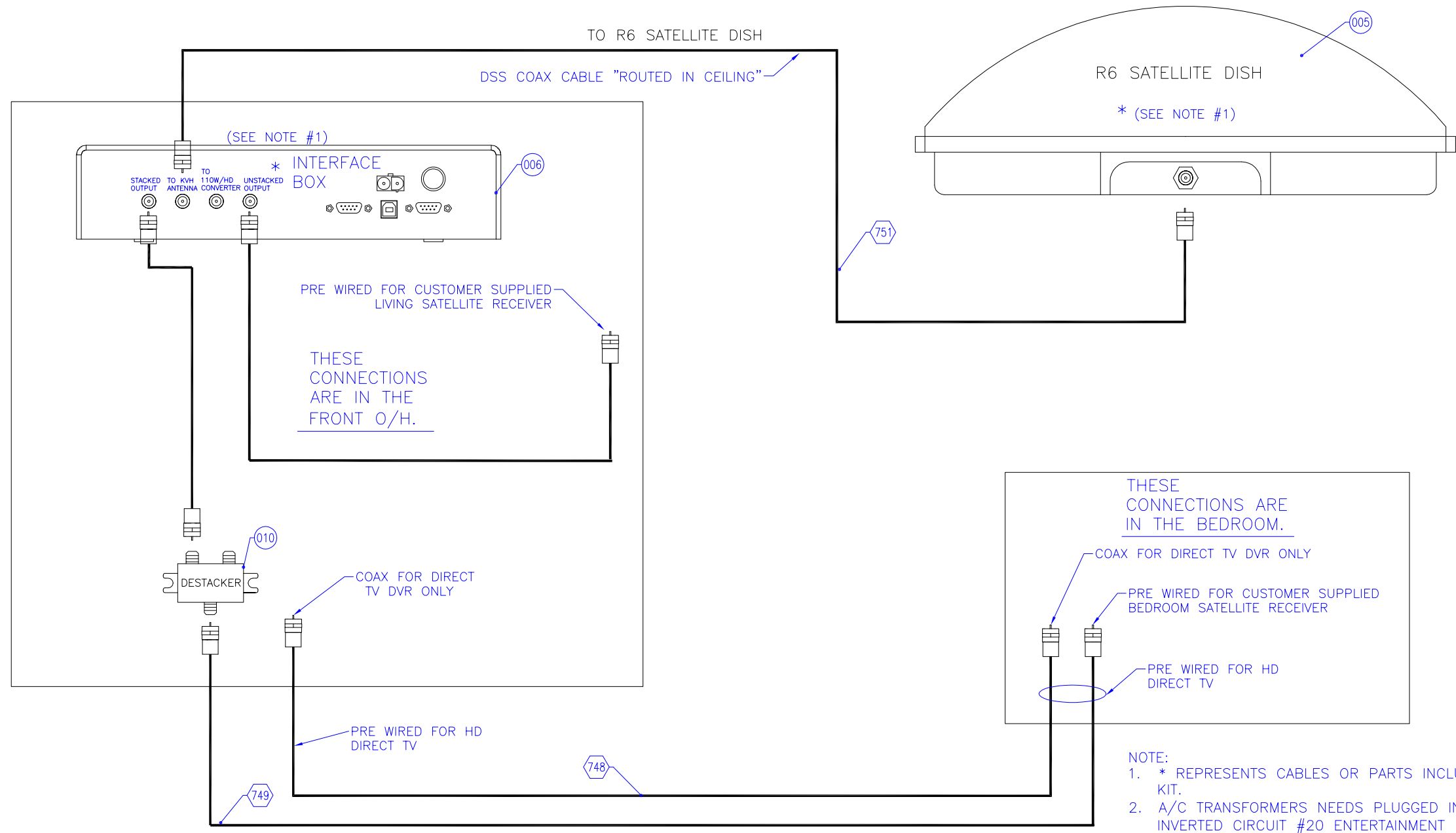
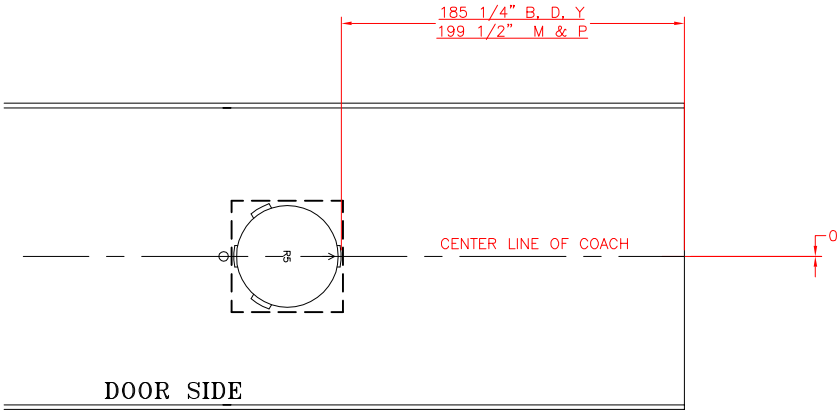


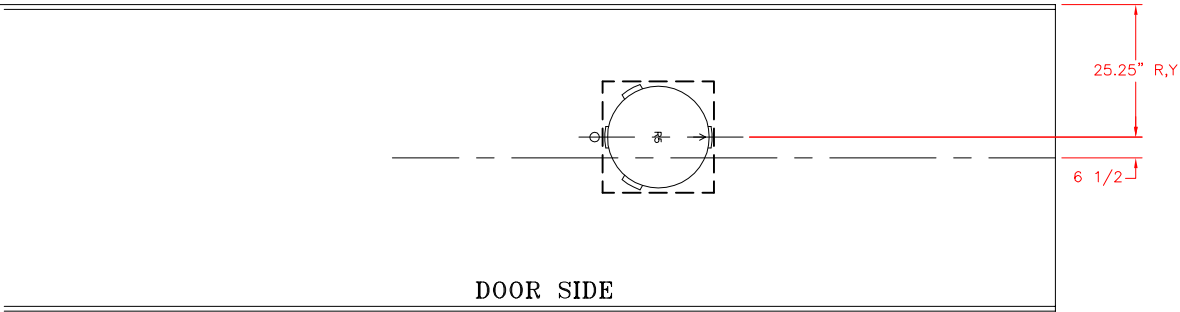
D.C. RELEASE	DESCRIPTION	DATE	BY	SCALE: NONE	USED ON:	<b>FLEETWOOD</b>	PAGE NO. 706-26-00210
				DRAWN: KIPFEF	DATE: 09-26-06	RECREATIONAL VEHICLE GROUP	SHEET 1 OF 3
				PROJECT: 12706599		TITLE: DSS SYSTEM W/DVR RECEIVER	
12-00		03/21/11	CSG	PLOT: 05/27/10 16:55:54 044hilla	AUX. INFO:		



D.C. RELEASE	DESCRIPTION	DATE	BY	SCALE: NONE	USED ON:	<b>FLEETWOOD</b>	PAGE NO. 706-26-00210
				DRAWN: Brandon W.	DATE: 09-27-04	RECREATIONAL VEHICLE GROUP	SHEET 2 OF 3
				PROJECT: 12706599		TITLE: DSS SYSTEM W/DVR RECEIVER	
12-00		03/21/11	CSG	PLOT: 05/27/10 16:55:58 044hilla	AUX. INFO:		

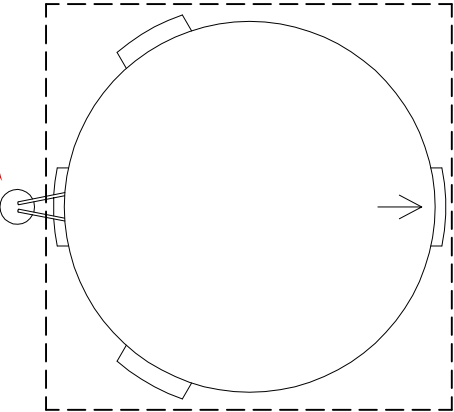


FRONT OF COACH →

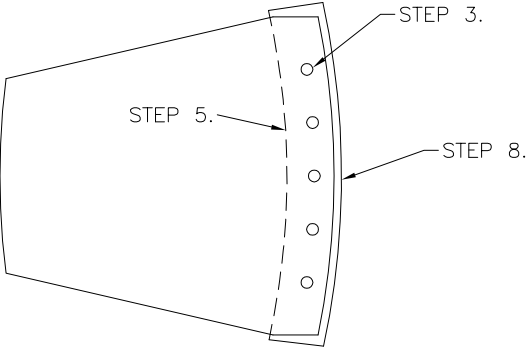


FRONT OF COACH →

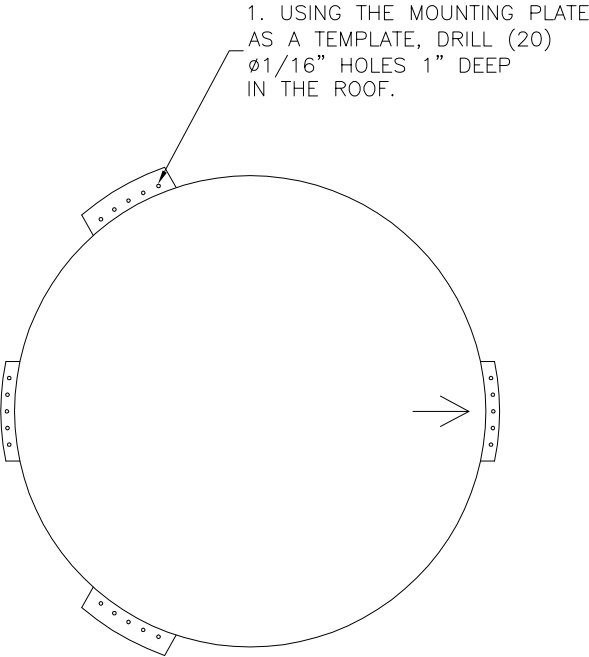
SEAL HOLE →



D.C. RELEASE	DESCRIPTION	DATE	BY	SCALE: NONE	USED ON:	<b>FLEETWOOD</b>	PAGE NO. 706-26-00210
				DRAWN: Brandon W.	DATE: 09-27-04	RECREATIONAL VEHICLE GROUP	SHEET 3 OF 3
				PROJECT: 12706599		TITLE: DSS SYSTEM W/DVR RECEIVER	
12-00		03/21/11	CSG	PLOT: 05/27/10 16:56:01 044hilla	AUX. INFO.		



TYPICAL MOUNTING PLATE  
(NOT TO SCALE.)



- 2. REMOVE UNIT AND CLEAN SURFACE.
- 3. FILL HOLES WITH SEALANT. (R14-0313-01)
- 4. REMOVE SHIPPING RESTRAINT LOCATED ON BOTTOM OF UNIT.
- 5. APPLY A BEAD OF SEALANT ACROSS THE ENTIRE BOTTOM OF THE MOUNTING PLATES TOWARDS THE INSIDE OF THE UNIT NEXT TO THE MOUNTING HOLES.
- 6. ATTACH UNIT TO ROOF WITH SCREWS.(M68-1009)
- 7. SEAL ALL SCREWS WITH SEALANT.
- 8. APPLY A BEAD OF SEALANT ON OUTSIDE OF BASE.

BRANCH: 127 MOTOR HOME DIVISION

FLEETWOOD RV, INC  
BILL OF MATERIAL REPORT

7/3/2014 2:28 PM  
PAGE: 1 OF 1

BILL PAGE: 706-26-00210 DSS SYSTEM UPGRADE

BILL PAGE: 706-26-00210

<u>BSEQ</u>	<u>ITEM NUMBER</u>	<u>DESCRIPTION</u>	<u>U/M</u>	<u>QTY</u>	<u>NOTES</u>	<u>FROM</u>	<u>THRU</u>
5	C70-0008	DISH- SAT IN MOTION KVH	EA	1		2/11/2013	12/31/2099
6	C70-0400	JBOX- R6 SATELLITE	EA	1		11/26/2009	12/31/2099
10	C70-0600	DESTACKER- HD DUAL RECEIVER	EA	1		10/2/2008	12/31/2099

\*\*\*\*\*END OF BILL\*\*\*\*\*